

Hartmetall-Rundstäbe, roh gesintert/geschliffen h6, L= 330 mm

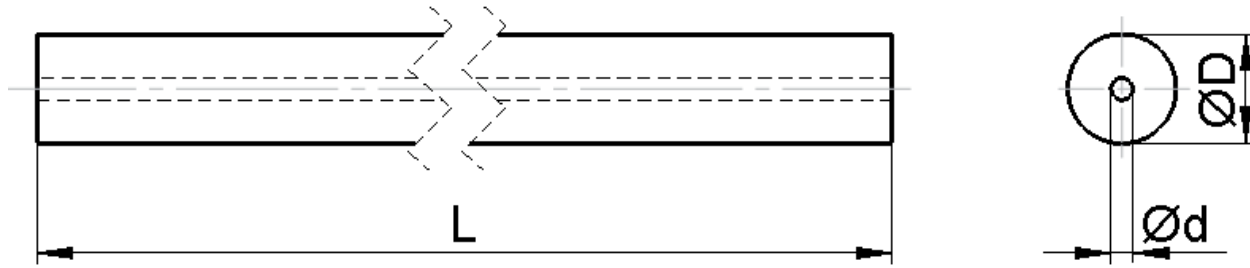
Tungsten carbide rods, as sintered/ground h6, L= 330 mm

Cylindres en métal dur, bruts de frittage/réctifié h6, L= 330 mm

Cilindretti in metallo duro, grezzi di sinterizzazione/rettificati h6, L= 330 mm

Abmessung Dimension Dimensioni	roh assinteread brut de frittage grezzi	geschliffen h6 grounded rectifiés rettificati	Artikel-Nr. Article-No. Article-No. Nr. Articolo
--------------------------------------	--	--	---

Ø mm sinterroh	Ø mm geschliffen	Länge mm	RX7-NG	RX8UF-NG	RX10-NG	RX12UF-NG	RX7-NG	RX8UF-NG	RX10-NG	RX12UF-NG	roh	geschliffen h6
1.7	1.5	330			x				x		080018	140015
2.2	2.0	330	x		x		x		x		080023	140020
2.7	2.5	330	x		x				x		080028	140025
3.2	3.0	330	x	x	x	x	x	x	x	x	080033	140030
3.7	3.5	330	x		x		x		x		080038	140035
4.2	4.0	330	x	x	x	x	x		x	x	080043	140040
4.7	4.5	330			x				x		080048	140045
5.2	5.0	330	x		x	x	x		x	x	080053	140050
5.7	5.5	330			x				x		080058	140055
6.2	6.0	330	x	x	x	x	x		x	x	080063	140060
6.7	6.5	330	x		x		x		x		080068	140065
7.2	7.0	330	x		x				x		080073	140070
7.7	7.5	330			x				x		080078	140075
8.2	8.0	330	x	x	x	x	x		x	x	080083	140080
8.7	8.5	330			x				x		080088	140085
9.2	9.0	330	x		x				x		080093	140090
9.7	9.5	330			x				x		080098	140095
10.2	10.0	330	x	x	x	x	x		x	x	080103	140100
10.7	10.5	330			x				x		080108	140105
11.2	11.0	330			x				x		080113	140110
12.2	12.0	330	x	x	x	x	x		x	x	080123	140120
13.2	13.0	330	x		x		x		x		080133	140130
14.2	14.0	330	x		x	x	x		x	x	080143	140140
15.2	15.0	330	x		x				x		080153	140150
16.2	16.0	330	x	x	x	x	x		x	x	080163	140160
17.2	17.0	330			x				x		080173	140170
18.2	18.0	330	x	x	x	x	x		x	x	080183	140180
19.2	19.0	330									080193	140190
20.2	20.0	330	x		x	x	x		x	x	080203	140200
21.2	21.0	330			x				x		080213	140210
22.2	22.0	330			x				x		080223	140220
23.2	23.0	330			x				x		080233	140230
24.2	24.0	330			x				x		080243	140240
25.2	25.0	330			x	x			x	x	080253	140250
26.2	26.0	330			x				x		080263	140260
28.2	28.0	330			x				x		080283	140280
30.2	30.0	330			x				x		080303	140300
31.2	31.0	330			x				x		080323	140320
32.2	32.0	330			x				x		080323	140320



Hartmetall-Rundstäbe mit 1 geraden Kühlmittelbohrung, roh gesintert, L = 330 mm

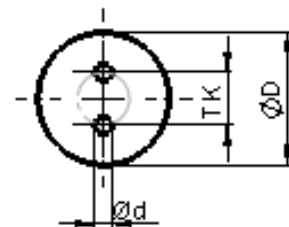
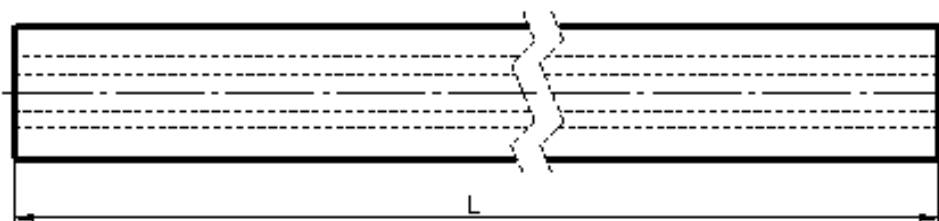
Tungsten carbide rods with 1 straight coolant hole, as sintered, L = 330 mm

Cylindres en métal dur avec 1 alésage central pour lubrifiant, bruts de frittage, L = 330 mm

Cilindretti in metallo duro con 1 foro centrale per il liquido refrigerante, grezzi

Abmessung Dimension Dimension Dimensioni	roh assintere brut de frittage grezzi	Artikel-Nr. Article-No. Article-No. Nr. Articolo
---	--	---

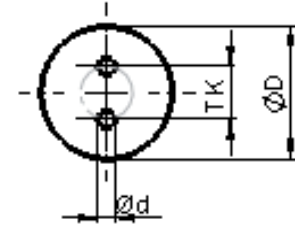
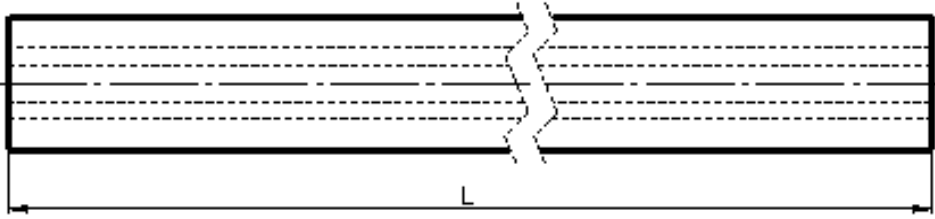
Ø mm sinterroh	Bo-Ø	Länge mm	RX10-NG	roh
2.2	0.8	330	x	0302300880
3.2	0.6	330	x	0303300680
4.2	0.6	330	x	0304300680
6.2	1.0	330	x	0306301080
6.2	1.5	330	x	0306301580
7.2	1.1	330	x	0307301180
8.2	1.2	330	x	0308301280
8.2	1.3	330	x	03A08301380
8.2	1.5	330	x	0308301580
8.2	2.0	330	x	0308302080
10.2	1.0	330	x	0310301080
10.2	1.6	330	x	0310301680
10.2	2.0	330	x	0310302080
12.2	1.5	330	x	0312301580
12.2	2.0	330	x	0312333080
12.2	3.0	330	x	0312303080
14.2	2.0	330	x	0314302080
14.2	2.5	330	x	0314302580
14.2	3.0	330	x	0314303080
16.2	2.0	330	x	0316302080
16.2	3.0	330	x	0316303080
18.2	3.0	330	x	0318333080
20.2	2.0	330	x	0320302080
20.2	3.0	330	x	03A20303080
20.2	3.5	330	x	0320303580
22.2	3.0	330	x	03A22303080
24.2	4.0	330	x	03A24304080
25.2	4.0	330	x	03A25304080
26.2	4.0	330	x	03A26304080
28.2	4.0	330	x	03A28304080
30.2	5.0	330	x	03A30305080
32.2	5.0	330	x	03A32305080



Hartmetall-Rundstäbe mit 2 parallelen Kühlmittelbohrungen, roh gesintert, L = 330 mm

Tungsten carbide rods with 2 straight coolant holes, as sintered, L = 330 mm
 Cylindres en métal dur, avec 2 trous parallèles pour lubrifiant, bruts de frittage, L = 330 mm
 Cilindretti in metallo duro con 2 fori paralleli per il liquido refrigerante, grezzi di sinterizzazione, L = 330 mm

Abmessung				roh	Artikel-Nr.
Dimension				assinteread	Article-No.
Dimension				brut de frittage	Article-No.
Dimensioni				grezzi	Nr. Articolo
D mm	L mm	TK mm	d mm	RX10-NG	roh
4.2	330	1.8	0.8	x	040430180880
5.2	330	1.9	0.8	x	04A0530190880
6.2	330	1.5	0.9	x	040630150980
6.2	330	3.0	1.2	x	040630301280
7.2	330	1.4	0.8	x	04A0730140880
7.2	330	3.4	1.0	x	04A0730341080
8.2	330	2.6	0.9	x	040830260980
8.2	330	2.8	1.0	x	040830281080
8.2	330	3.3	0.9	x	040830330980
9.2	330	2.5	1.0	x	04A0930251080
10.2	330	3.5	1.5	x	041030351580
10.2	330	4.9	1.4	x	04A1030491480
10.2	330	5.0	1.2	x	041030501280
11.2	330	3.4	1.2	x	04A1130341280
11.2	330	4.9	1.4	x	04A1130491480
12.2	330	3.5	0.9	x	041230350980
12.2	330	6.2	1.5	x	041230621580
13.2	330	3.4	1.2	x	04A1330341280
13.2	330	5.9	1.8	x	04A1330591880
14.2	330	3.5	1.5	x	041430351580
15.2	330	4.9	1.5	x	04A1530491580
15.2	330	6.9	2.0	x	04A1530692080
16.2	330	5.0	1.5	x	041630501580
16.2	330	6.2	2.0	x	041630622080
16.2	330	8.0	2.0	x	041630802080
17.2	330	6.0	2.0	x	04A1730602080
17.2	330	7.9	2.0	x	04A1730792080
18.2	330	6.0	2.0	x	04A1830602080
18.2	330	8.9	2.0	x	04A1830892080
19.2	330	6.0	2.0	x	04A1930602080
19.2	330	8.8	2.0	x	04A1930882080
20.2	330	6.0	2.0	x	04A2030602080
20.2	330	9.8	2.5	x	04A2030982580
21.2	330	6.0	2.0	x	04A2130602080
21.2	330	9.8	2.5	x	04A2130982580
22.2	330	6.0	2.0	x	04A2230602080
22.2	330	10.8	2.5	x	04A2231082580
23.2	330	7.3	2.0	x	04A2330732080
23.2	330	10.8	2.5	x	04A2331082580
24.2	330	7.3	2.0	x	04A2430732080
24.2	330	11.8	3.0	x	04A2431183080
25.2	330	7.3	2.0	x	04A2530732080
25.2	330	11.8	3.0	x	04A2531183080
26.2	330	12.8	3.0	x	04A2631283080
28.2	330	13.8	3.0	x	04A2831383080



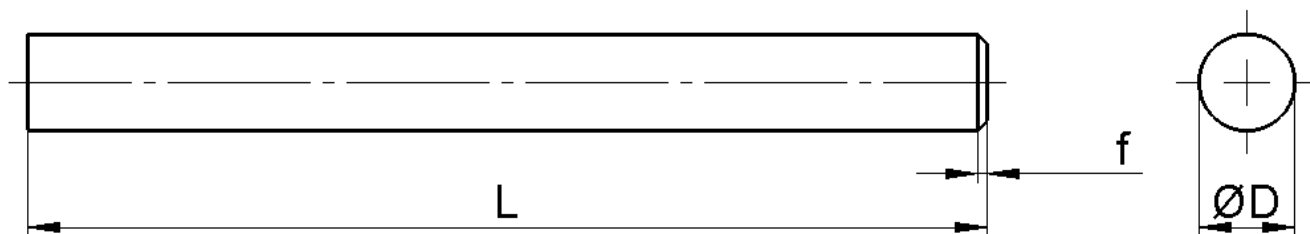
Hartmetall-Rundstäbe mit 2 parallelen Kühlmittelbohrungen, roh gesintert, L = 330 mm

Tungsten carbide rods with 2 straight coolant holes, as sintered, L = 330 mm

Cylindres en métal dur, avec 2 trous parallèles pour lubrifiant, bruts de frittage, L = 330 mm

Cilindretti in metallo duro con 2 fori paralleli per il liquido refrigerante, grezzi di sinterizzazione. L = 330 mm

Abmessung Dimension Dimension Dimensioni			roh assintere brut de frittage grezzi	Artikel-Nr. Article-No. Article-No. Nr. Articolo	
D mm	L mm	TK mm	d mm	RX10-NG	roh
30.2	330	13.8	3.0	x	04A3031383080
32.2	330	13.8	3.0	x	04A3231383080
34.2	330	13.8	3.0	x	04A3431383080



Hartmetall-Rundstäbe in Fixlängen (ISO), geschliffen h6 (h5), mit einseitiger Fase

Tungsten carbide rods in fix lengths (ISO), finish ground h6 (h5), with chamfer on one side
 Cylindres en métal dur en longueurs fixes (ISO), rectifiés h6 (h5), avec une coté chanfreinée
 Cilindretti in metallo duro in lunghezze fisse (ISO), rettificati h6 (h5), con smusso da un Lato

Abmessung Dimension Dimension Dimensioni	Sorte Grade Nuance Qualità	Artikel-Nr. Article-No. Article-No. Nr. Articolo
---	-------------------------------------	---

D mm	L mm	f	RX10-NG	
3.0	40.0	0.2 x 45°	x	180304080
3.0	50.0	0.2 x 45°	x	180305080
4.0	40.0	0.3 x 45°	x	180404080
4.0	50.0	0.3 x 45°	x	180405080
5.0	50.0	0.3 x 45°	x	180505080
6.0	50.0	0.4 x 45°	x	180605080
6.0	57.0	0.4 x 45°	x	180605780
6.0	60.0	0.4 x 45°	x	180606080
8.0	58.0	0.4 x 45°	x	180805880
8.0	63.0	0.4 x 45°	x	180806380
10.0	66.0	0.4 x 45°	x	181006680
10.0	72.0	0.4 x 45°	x	181007280
12.0	73.0	0.7 x 45°	x	181207380
12.0	83.0	0.7 x 45°	x	181208380
14.0	75.0	0.7 x 45°	x	181407580
14.0	83.0	0.7 x 45°	x	181408380
16.0	82.0	0.7 x 45°	x	181608280
16.0	92.0	0.7 x 45°	x	181609280
18.0	92.0	0.9 x 45°	x	181809280
20.0	104.0	0.9 x 45°	x	182010480

Sonderausführungen, andere Sorten oder Abmessungen auf Anfrage

Special executions, grades or dimensions upon request

Exécutions spéciales, autres nuances ou dimensions sur demande

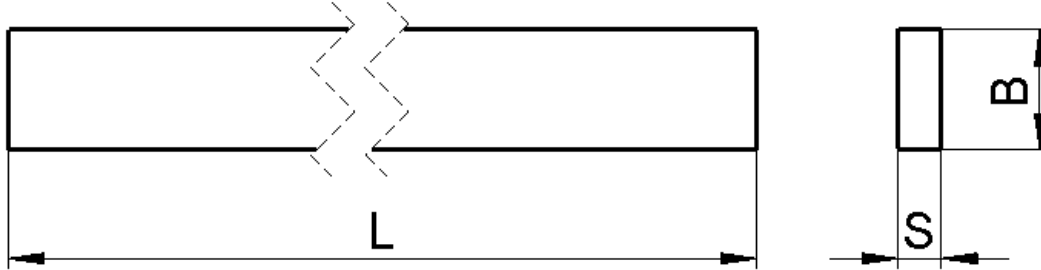
Esecuzioni speciali, altre qualità oppure dimensioni su richiesta

Lieferung ab Lager, Zwischenverkauf vorbehalten, gemäß Allgemeinen Geschäftsbedingungen

Delivery from stock, subject to prior sale, according to standard business conditions

Livraison du stock, vente intermédiaire réservée, selon conditions générales d'affaires

Consegna del magazzino, salvo vendita, secondo condizioni generali di contratto



Hartmetall-Rechteck- und Quadratstäbe, roh gesintert, Masse sind Rohmasse, L = 330 mm

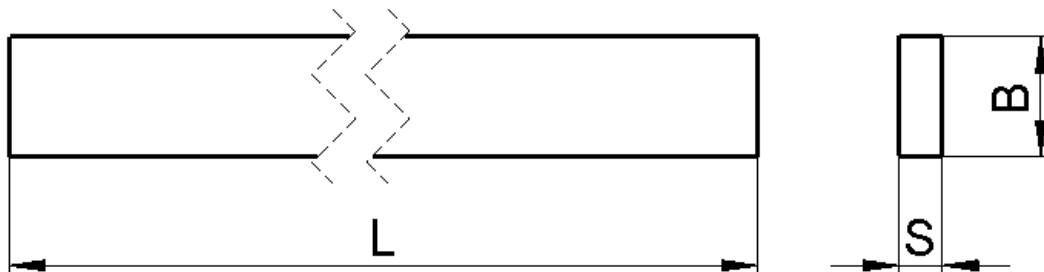
Tungsten carbide flats and squares, in as sintered sizes, L = 330 mm

Barreaux rectangulaires et carrés en métal dur, bruts de frittage, mesures brutes, L = 330 mm

Barrette piatte e quadre in metallo duro, grezze di sinterizzazione, in misure grezze, L = 330 mm

Abmessung Dimension Dimension Dimensioni	Sorte Grade Nuance Qualità	Artikel-Nr. Article-No. Article-No. Nr. Articolo
---	-------------------------------------	---

S mm	B mm	L mm	Gr.	RX7-NG	RX10-NG	
1.3	3.3	330	21.2	x	x	2013033330
1.3	4.3	330	27.7	x	x	2013043330
1.8	2.3	330	20.5	x	x	2018023330
1.8	3.3	330	29.4	x	x	2018033330
1.8	4.3	330	38.3	x	x	2018043330
1.8	5.3	330	47.2	x	x	2018053330
1.8	6.3	330	56.1	x	x	2018063330
1.8	8.3	330	74.0	x	x	2018083330
1.8	10.3	330	91.8	x	x	2018103330
2.3	3.3	330	37.6	x	x	2023033330
2.3	4.3	330	49.0	x	x	2023043330
2.3	5.3	330	60.3	x	x	2023053330
2.3	6.3	330	71.7	x	x	2023063330
2.3	8.3	330	94.5	x	x	2023083330
2.3	10.3	330	117.3	x	x	2023103330
2.3	12.4	330	141.2	x	x	2023124330
2.3	15.4	330	175.3	x	x	2023154330
2.3	16.4	330	186.7	x	x	2023164330
2.3	18.4	330	209.5	x	x	2023184330
2.3	20.4	330	232.3	x	x	2023204330
2.3	25.4	330	289.2	x	x	2023254330
2.8	4.3	330	59.6	x	x	2028043330
2.8	6.3	330	87.3	x	x	2028063330
2.8	8.3	330	115.0	x	x	2028083330
2.8	10.3	330	142.8	x	x	2028103330
2.8	12.4	330	171.9	x	x	2028124330
2.8	15.4	330	213.4	x	x	2028154330
3.3	4.3	330	70.2	x	x	2033043330
3.3	5.3	330	86.6	x	x	2033053330
3.3	6.3	330	102.9	x	x	2033063330
3.3	8.3	330	135.6	x	x	2033083330
3.3	10.3	330	168.3	x	x	2033103330
3.3	12.4	330	202.6	x	x	2033124330
3.3	13.4	330	218.9	x	x	2033134330
3.3	14.4	330	235.2	x	x	2033144330
3.3	16.4	330	267.9	x	x	2033164330
3.3	18.4	330	300.6	x	x	2033184330
3.3	20.4	330	333.2	x	x	2033204330
3.3	22.4	330	365.9	x	x	2033224330
3.3	25.4	330	414.9	x	x	2033254330
3.3	30.4	330	496.6	x	x	2033304330
3.3	32.4	330	529.3	x	x	2033324330
4.3	5.3	330	112.8	x	x	2043053330
4.3	6.3	330	134.1	x	x	2043063330
4.3	8.3	330	176.7	x	x	2043083330
4.3	10.3	330	219.2	x	x	2043103330



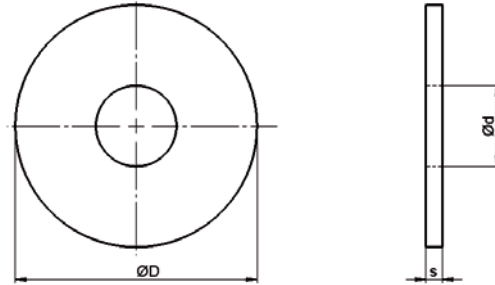
Hartmetall-Rechteck- und Quadratstäbe, roh gesintert, Masse sind Rohmasse, L = 330 mm

Tungsten carbide flats and squares, in as sintered sizes, L = 330 mm

Barreaux rectangulaires et carrés en métal dur, bruts de frittage, mesures brutes, L = 330 mm

Barrette piatte e quadre in metallo duro, grezze di sinterizzazione, in misure grezze, L = 330 mm

Abmessung Dimension Dimension Dimensioni			Sorte Grade Nuance Qualità	Artikel-Nr. Article-No. Article-No. Nr. Articolo		
S mm	B mm	L mm	Gr.	RX7-NG	RX10-NG	
4.3	12.4	330	263.9	x	x	2043124330
4.3	14.4	330	306.5	x	x	2043144330
4.3	16.4	330	349.1	x	x	2043164330
4.3	18.4	330	391.6	x	x	2043184330
4.3	20.4	330	434.2	x	x	2043204330
4.3	22.4	330	476.8	x	x	2043224330
4.3	25.4	330	540.6	x	x	2043254330
4.3	30.4	330	647.1	x	x	2043304330
4.3	35.4	330	753.5	x	x	2043354330
5.3	8.3	330	217.8	x	x	2053083330
5.3	10.3	330	270.2	x	x	2053103330
5.3	15.4	330	404.0	x	x	2053154330
5.3	16.4	330	430.3	x	x	2053164330
5.3	18.4	330	482.7	x	x	2053184330
5.3	20.4	330	535.2	x	x	2053204330
5.3	22.4	330	587.7	x	x	2053224330
5.3	25.4	330	666.4	x	x	2053254330
5.3	30.4	330	797.5	x	x	2053304330
5.3	35.4	330	928.7	x	x	2053354330
6.3	16.4	330	511.4	x	x	2063164330
6.3	20.4	330	636.2	x	x	2063204330
6.3	25.4	330	792.1	x	x	2063254330
6.3	30.4	330	948.0	x	x	2063304330
6.3	35.4	330	1103.9	x	x	2063354330
2.3	2.3	330	26.2		x	2102302330
3.3	3.3	330	53.9		x	2103303330
4.3	4.3	330	91.5		x	2104304330
5.3	5.3	330	139.0		x	2105305330
6.3	6.3	330	196.5		x	2106306330
8.3	8.3	330	341.0		x	2108308330
10.3	10.3	330	525.1		x	2110310330
12.4	12.4	330	761.1		x	2112412430



Hartmetall-Rondellen, roh gesintert

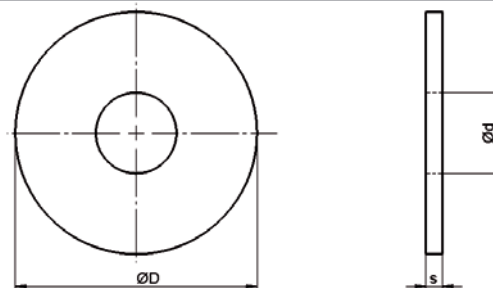
Solid tungsten carbide slitting saws, as sintered

Ebauches pour scies circulaires en métal dur monobloc, bruts de frittage

Dischi per seghe circolari in metallo duro, grezzi di sinterizzazione

Abmessung Dimension Dimension Dimensioni	roh assintere brut de frittage grezzi	Artikel-Nr. Article-No. Article-No. Nr. Articolo
---	--	---

D mm	d mm	s mm	Gr	RF13	roh
12.5	4.7	2.8	4.43	x	55012280505
15.5	4.7	0.7	1.80	x	55015070505
15.5	4.7	1.0	2.57	x	55015100505
15.5	4.7	1.3	3.34	x	55015130505
15.5	4.7	1.5	3.86	x	55015150505
15.5	4.7	1.8	4.63	x	55015180505
15.5	4.7	2.1	5.40	x	55015210505
15.5	4.7	2.3	5.91	x	55015230505
15.5	4.7	2.8	7.20	x	55015280505
15.5	4.7	3.3	8.48	x	55015330505
20.5	4.7	0.7	3.28	x	55020070505
20.5	4.7	0.9	4.22	x	55020090505
20.5	4.7	1.0	4.69	x	55020100505
20.5	4.7	1.2	5.63	x	55020120505
20.5	4.7	1.3	6.10	x	55020130505
20.5	4.7	1.5	7.04	x	55020150505
20.5	4.7	1.7	7.97	x	55020170505
20.5	4.7	2.1	9.85	x	55020210505
20.5	4.7	2.3	10.79	x	55020230505
20.5	4.7	3.3	15.48	x	55020330505
25.5	7.7	0.7	4.87	x	55025070805
25.5	7.7	1.0	6.96	x	55025100805
25.5	7.7	1.3	9.05	x	55025130805
25.5	7.7	1.5	10.44	x	55025150805
25.5	7.7	1.8	12.53	x	55025180805
25.5	7.7	2.3	16.01	x	55025230805
25.5	7.7	3.3	22.97	x	55025330805
30.5	7.7	0.7	7.18	x	55030070805
30.5	7.7	0.9	9.23	x	55030090805
30.5	7.7	1.0	10.26	x	55030100805
30.5	7.7	1.3	13.34	x	55030130805
30.5	7.7	1.8	18.47	x	55030180805
30.5	7.7	2.0	20.52	x	55030200805
30.5	7.7	2.3	23.60	x	55030230805
30.5	7.7	2.8	28.73	x	55030280805
30.5	7.7	3.0	30.78	x	55030300805
30.5	7.7	3.3	33.86	x	55030330805
30.5	7.7	3.5	35.91	x	55030350805
30.5	7.7	3.8	38.99	x	55030380805
30.5	7.7	4.3	44.12	x	55030430805
32.5	7.7	0.7	8.22	x	55032070805
32.5	7.7	0.9	10.57	x	55032090805
32.5	7.7	1.0	11.75	x	55032100805
32.5	7.7	1.2	14.09	x	55032120805
32.5	7.7	1.3	15.27	x	55032130805
32.5	7.7	1.5	17.62	x	55032150805
32.5	7.7	1.8	21.14	x	55032180805

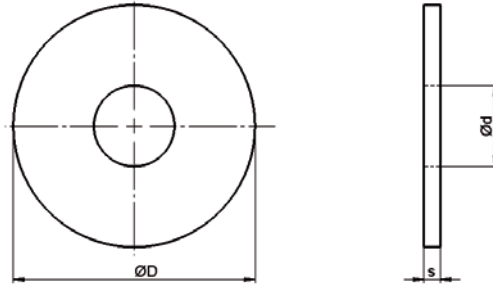


Hartmetall-Rondellen, roh gesintert

Solid tungsten carbide slitting saws, as sintered
 Ebauches pour scies circulaires en métal dur monobloc, bruts de frittage
 Dischi per seghe circolari in metallo duro, grezzi di sinterizzazione

Abmessung Dimension Dimension Dimensioni	roh assintere brut de frittage grezzi	Artikel-Nr. Article-No. Article-No. Nr. Articolo
---	--	---

D mm	d mm	s mm	Gr	RF13	roh
32.5	7.7	2.0	23.49	x	55032200805
32.5	7.7	2.3	27.01	x	55032230805
32.5	7.7	2.5	29.36	x	55032250805
32.5	7.7	2.8	32.89	x	55032280805
32.5	7.7	3.3	38.76	x	55032330805
32.5	7.7	3.5	41.11	x	55032350805
32.5	7.7	3.8	44.63	x	55032380805
32.5	7.7	4.0	46.98	x	55032400805
32.5	7.7	4.3	50.50	x	55032430805
32.5	7.7	4.5	52.85	x	55032450805
40.5	9.7	0.8	14.57	x	55040081005
40.5	9.7	1.0	18.22	x	55040101005
40.5	9.7	1.3	23.68	x	55040131005
40.5	9.7	1.5	27.32	x	55040151005
40.5	9.7	1.8	32.79	x	55040181005
40.5	9.7	2.3	41.90	x	55040231005
40.5	9.7	2.8	51.00	x	55040281005
40.5	9.7	3.0	54.65	x	55040301005
40.5	9.7	3.3	60.11	x	55040331005
40.5	9.7	3.8	69.22	x	55040381005
40.5	9.7	4.3	78.33	x	55040431005
40.5	9.7	4.8	87.43	x	55040481005
40.5	9.7	5.8	105.65	x	55040581005
40.5	9.7	6.3	114.76	x	55040631005
40.5	9.7	6.6	120.22	x	55040661005
50.5	9.7	0.8	23.15	x	55050081005
50.5	12.7	0.8	22.52	x	55050081305
50.5	9.7	1.0	28.94	x	55050101005
50.5	12.7	1.0	28.14	x	55050101305
50.5	12.7	1.3	36.59	x	55050131305
50.5	12.7	1.5	42.22	x	55050151305
50.5	9.7	1.8	52.08	x	55050181005
50.5	12.7	1.8	50.66	x	55050181305
50.5	12.7	2.0	56.29	x	55050201305
50.5	12.7	2.3	64.73	x	55050231305
50.5	12.7	2.6	73.18	x	55050261305
50.5	12.7	2.8	78.80	x	55050281305
50.5	12.7	3.0	84.43	x	55050301305
50.5	12.7	3.3	92.88	x	55050331305
50.5	12.7	3.8	106.95	x	55050381305
50.5	12.7	4.3	121.02	x	55050431305
50.5	12.7	6.3	177.31	x	55050631305
63.5	15.7	0.8	35.68	x	55063081605
63.5	15.7	1.0	44.60	x	55063101605
63.5	15.7	1.3	57.98	x	55063131605
63.5	15.7	1.5	66.90	x	55063151605
63.5	15.7	1.8	80.28	x	55063181605



Hartmetall-Rondellen, roh gesintert

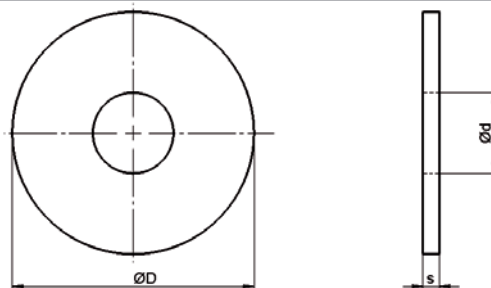
Solid tungsten carbide slitting saws, as sintered

Ebauches pour scies circulaires en métal dur monobloc, bruts de frittage

Dischi per seghe circolari in metallo duro, grezzi di sinterizzazione

Abmessung Dimension Dimension Dimensioni	roh assintere brut de frittage grezzi	Artikel-Nr. Article-No. Article-No. Nr. Articolo
---	--	---

D mm	d mm	s mm	Gr	RF13	roh
63.5	15.7	2.3	102.58	x	55063231605
63.5	15.7	2.8	124.88	x	55063281605
63.5	15.7	3.0	133.80	x	55063301605
63.5	15.7	3.3	147.18	x	55063331605
63.5	15.7	3.8	169.48	x	55063381605
63.5	15.7	4.3	191.78	x	55063431605
63.5	15.7	4.8	214.08	x	55063481605
63.5	15.7	5.3	236.38	x	55063531605
63.5	15.7	6.3	280.98	x	55063631605
70.5	15.7	0.8	44.52	x	55070081605
70.5	15.7	1.0	55.65	x	55070101605
70.5	15.7	1.3	72.35	x	55070131605
70.5	15.7	1.8	100.17	x	55070181605
70.5	15.7	2.3	128.00	x	55070231605
70.5	15.7	3.3	183.65	x	55070331605
80.5	21.7	0.7	49.56	x	55080072205
80.5	21.7	0.8	56.64	x	55080082205
80.5	21.7	1.0	70.80	x	55080102205
80.5	15.7	1.3	95.47	x	55080131605
80.5	21.7	1.3	92.03	x	55080132205
80.5	15.7	1.5	110.16	x	55080151605
80.5	21.7	1.5	106.19	x	55080152205
80.5	15.7	1.8	132.19	x	55080181605
80.5	21.7	1.8	127.43	x	55080182205
80.5	15.7	2.3	168.91	x	55080231605
80.5	21.7	2.3	162.83	x	55080232205
80.5	21.7	2.5	176.99	x	55080252205
80.5	15.7	2.8	205.63	x	55080281605
80.5	21.7	2.8	198.23	x	55080282205
80.5	15.7	3.3	242.35	x	55080331605
80.5	21.7	3.3	233.63	x	55080332205
80.5	21.7	3.5	247.79	x	55080352205
80.5	21.7	4.0	283.18	x	55080402205
80.5	21.7	4.3	304.42	x	55080432205
80.5	21.7	4.8	339.82	x	55080482205
80.5	15.7	6.3	462.67	x	55080631605
100.5	21.7	1.0	113.44	x	55100102205
100.5	21.7	1.3	147.48	x	55100132205
100.5	21.7	1.5	170.16	x	55100152205
100.5	21.7	1.8	204.20	x	55100182205
100.5	21.7	2.0	226.89	x	55100202205
100.5	21.7	2.3	260.92	x	55100232205
100.5	21.7	2.5	283.61	x	55100252205
100.5	21.7	2.8	317.64	x	55100282205
100.5	21.7	3.3	374.36	x	55100332205
100.5	21.7	3.5	397.05	x	55100352205
100.5	21.7	4.3	487.81	x	55100432205

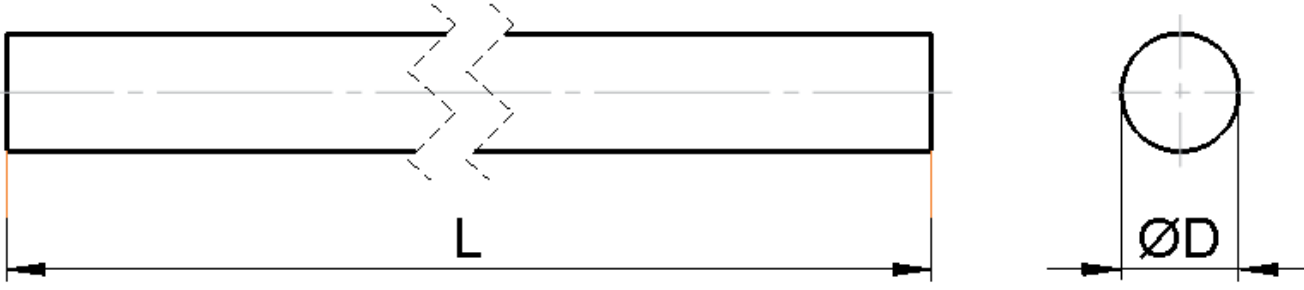


Hartmetall-Rondellen, roh gesintert

Solid tungsten carbide slitting saws, as sintered
 Ebauches pour scies circulaires en métal dur monobloc, bruts de frittage
 Dischi per seghe circolari in metallo duro, grezzi di sinterizzazione

Abmessung Dimension Dimension Dimensioni	roh assintere brut de frittage grezzi	Artikel-Nr. Article-No. Article-No. Nr. Articolo
---	--	---

D mm	d mm	s mm	Gr	RF13	roh
125.5	21.7	1.1	198.01	x	55125112205
125.5	21.7	1.3	234.01	x	55125132205
125.5	21.7	1.5	270.01	x	55125152205
125.5	21.7	2.1	378.01	x	55125212205
125.5	21.7	2.3	414.01	x	55125232205
125.5	21.7	3.3	594.02	x	55125332205
150.5	31.7	2.1	535.51	x	55150213205
150.5	31.7	2.3	586.51	x	55150233205
160.5	31.7	1.3	379.13	x	55160133205
160.5	31.7	1.5	437.46	x	55160153205
160.5	31.7	1.8	524.96	x	55160183205
160.5	31.7	2.1	612.45	x	55160213205
160.5	31.7	2.3	670.78	x	55160233205
160.5	31.7	2.8	816.60	x	55160283205
200.5	31.7	1.8	831.17	x	55200183205

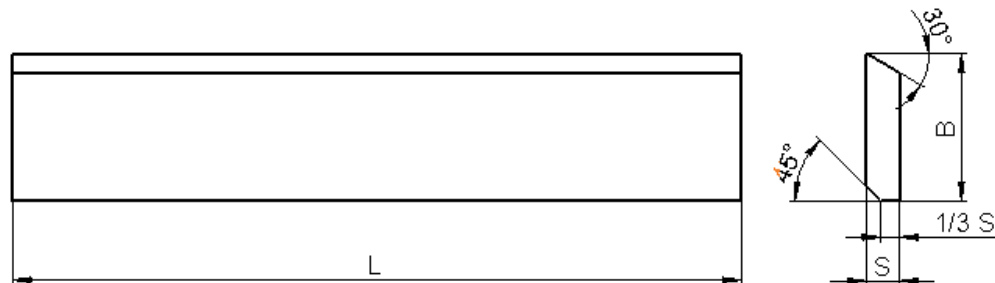


Hartmetall-Rundstäbe, roh gesintert / geschliffen h6, L=330 mm

Tungsten carbide rods, as sintered / finish ground h6, L= 330 mm
 Cylindres en métal dur, bruts de frittage / rectifiés h6, L= 330 mm
 Cilindretti in metallo duro, grezzi di sinterizzazione / rettificati h6, L= 330 mm

Alternative Fe/Ni/Co-Binder

Abmessung Dimension Dimension Dimensioni			Sorte Grade Nuance Qualità	Artikel-Nr. Article-No. Article-No. Nr. Articolo			
D mm	L mm	Gr.	RXE20	RXE40	roh	geschliffen h6	
3.0	330.0	35.0		x	080033	140030	
4.0	330.0	62.2		x	080043	140040	
5.0	330.0	97.2		x	080053	140050	
6.0	330.0	140.0	x	x	080063	140060	
8.0	330.0	248.8	x	x	080083	140080	
10.0	330.0	388.8	x	x	080103	140100	
12.0	330.0	559.8	x	x	080123	140120	
14.0	330.0	762.0	x	x	080143	140140	
16.0	330.0	995.3	x	x	080163	140160	
18.0	330.0	1259.6	x	x	080183	140180	
20.0	330.0	1555.1		x	080203	140200	



Hartmetall-Stäbe für die Holzbearbeitung HS31, roh gesintert HIP Alternative Fe/Ni/Co-Binder

Tungsten carbide strips for wood working HS31, as sintered HIP
 Barreaux métal dur pour le travail du bois HS31, bruts de frittage HIP
 Barrette in metallo duro per la lavorazione del legno HS31, grezze die sinterizzazione HIP

Abmessung Dimension Dimension Dimensioni			Sorte Grade Nuance Qualità	Artikel-Nr. Article-No. Article-No. Nr. Articolo
B mm	S mm	L mm	Gr.	RXE40
16.0	4.0	310.0	298	x
20.0	4.0	310.0	372	x
25.0	4.0	310.0	465	x
30.0	4.0	310.0	558	x